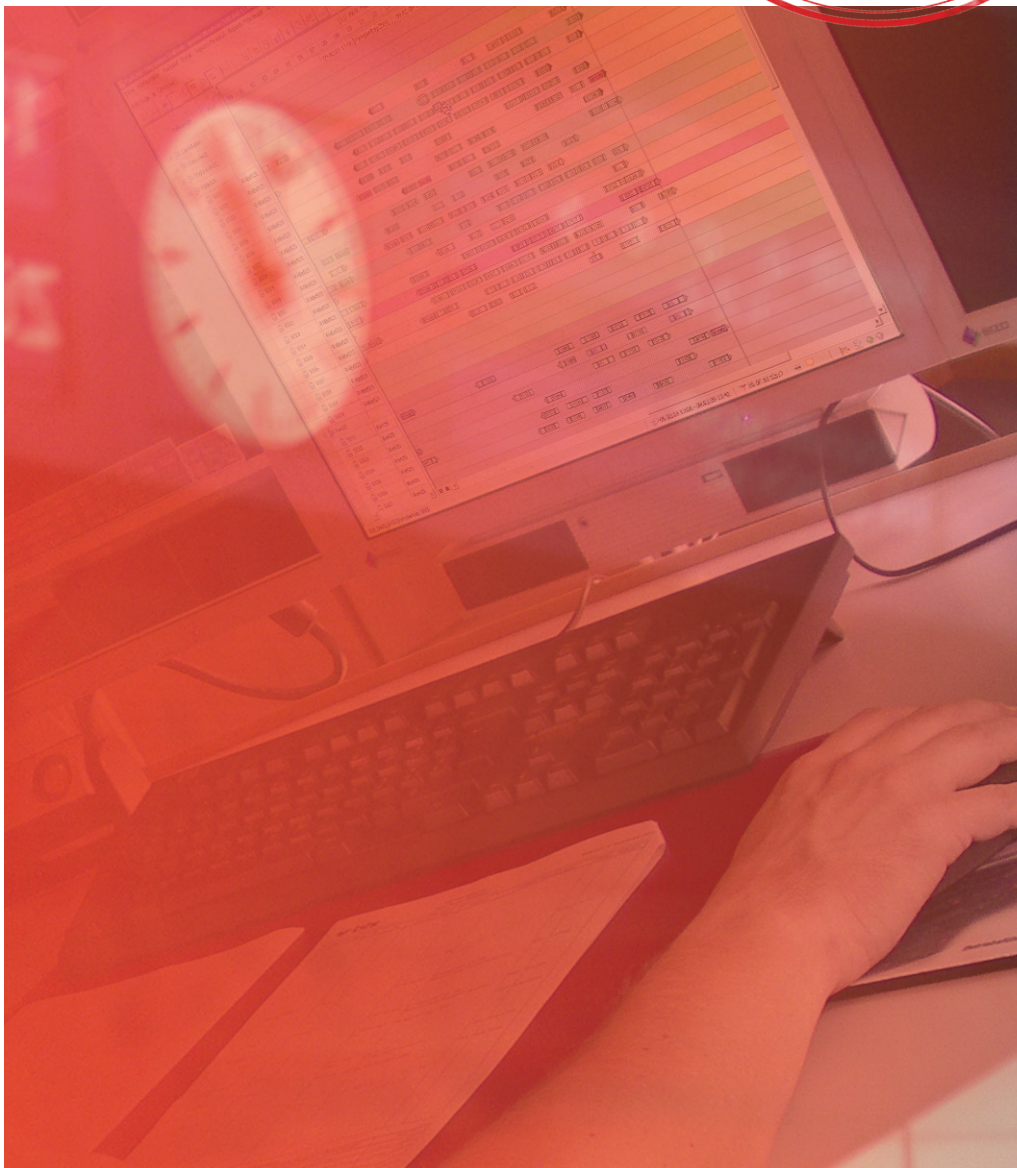


# RailOpt<sup>®</sup> Suite

RailOpt<sup>®</sup>-Suite efficiency and transparency for planning personnel



**RailOpt<sup>®</sup> for:**

**Management and financial controlling**

**IT administrators**

**Planning personnel**

**Operations supervisors**

**Planned personnel**

The RailOpt®-Suite is the leading integrated resource management system in the railway industry. The unique IRM® (Intelligent Resource Management) approach allows RailOpt® to cover the entire simulation, planning and production process for all resources deployed, bringing transparency to your value chain. That makes RailOpt a solid foundation for significant efficiency improvements.

RailOpt is a ONE-STOP solution that enables you to plan resources across all time stages and factor them into all planning areas. The system supports you in your work with a clear overview, reports, conflict alerts and much more.

RailOpt has been proving its worth with leading railway companies in Europe for several years already.

Customers who use RailOpt for their traction (vehicles & drivers), on-board personnel, cleaning, depot and shift personnel operations include:

- ▶ BLS (Switzerland)
- ▶ SOB (Switzerland)
- ▶ SJ (Sweden)
- ▶ CFL (Luxembourg)
- ▶ MEV (Switzerland)



## Benefits

### High degree of user friendliness and practical relevance

Implementation of the functions is based on the many years of practical experience gained by Qnamic AG and the industry knowledge of its customers.

The consistent structure of the interfaces and functions helps you prepare plans

quickly and reliably across all products and modules.

This allows users to familiarise themselves quickly with new planning fields, making them flexible in deployment.

### Compliance with safety-relevant work time rules and qualifications

RailOpt verifies that you are compliant with all work time rules and collective agreements.

It also performs a parallel check: RailOpt determines whether a resource for executing the service to be planned requires particular expertise or qualifications. It does so by

comparing the resources with the existing and required qualifications.

These checks form the basis for ensuring that train operation complies with regulations at all times.

### **Simultaneous planning of vehicle and personnel resources**

RailOpt enables the various activities needed for the performance of a service to be planned simultaneously in terms of personnel and vehicle resources.

This means that the changes and effects are applied to all resources at the same time and automatically implemented in other areas.

### **Automated communication between planners and personnel**

RailOpt simplifies your daily work. You can, for instance, retrieve service plans or create daily run orders. The system accesses the day-to-day planning, topology and timetable data, ensuring that you always have the very latest information.

RailOpt® WEB even allows incidents or new data to be reported to the driver straight from the planning board. You are informed of the latest situation immediately from your mobile device, removing the hassle of creating and distributing documents between personnel and planners.

### **Efficiency improvements through planning optimisation**

RailOpt® DSS enables planning to be optimised interactively. This means that the system determines a concrete proposal for the most efficient use of resources.

This planning result serves as a basis for reaching a decision on the subsequent planning stages.

## **Service spectrum**

### **Flexible and dynamic standard product**

RailOpt is a standard product that is constantly being enhanced. Nevertheless, the products are flexible and can be adapted to individual requirements through configurations and customised add-ons.

A dedicated integration layer allows the products of the RailOpt suite to be embedded seamlessly in your existing system landscape.

### **Implementation**

Implementation is based on extensive project experience and partnerships with world-leading consulting and implementation specialists, such as our strategic partners CSC and Logica.

Qnamic Inc. will also soon be able to host RailOpt products. SaaS (Software as a Service) allows customers to dispense with the procurement and administration of their own IT infrastructure and use RailOpt conveniently as a service.

### **Coaching and training**

To enable you to introduce RailOpt rapidly in your company, Qnamic Inc. will provide you with the necessary technical and organisational support in the introduction process.

This includes extensive training courses to ensure that users and system administrators are trained quickly and effectively.

## About us

### Intelligent Resource Management (IRM®)

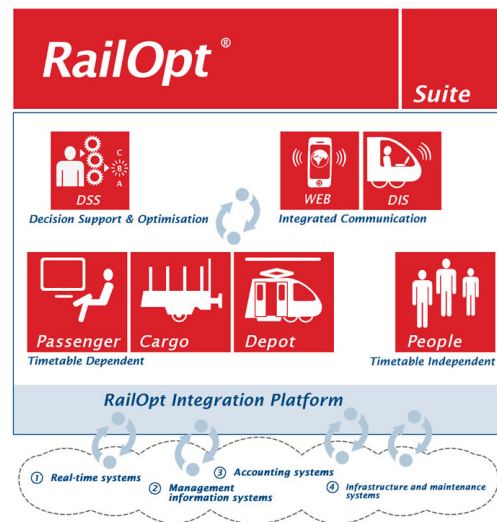
Qnamic Inc. stands for Intelligent Resource Management IRM. IRM enables the integrated, transparent and simultaneous planning of all necessary resources (e.g.

personnel and vehicle resources) at every stage of the logistical value chain with just one modular system.

### RailOpt®-Suite – efficiency through transparency

The RailOpt-Suite includes integrated resource management products for freight traffic and passenger traffic, preparation and communication.

RailOpt differs from other planning systems in that the software was developed specifically for the railway environment and is the only planning and production solution for railway companies that can handle personnel and vehicle resources across the entire value chain simultaneously.



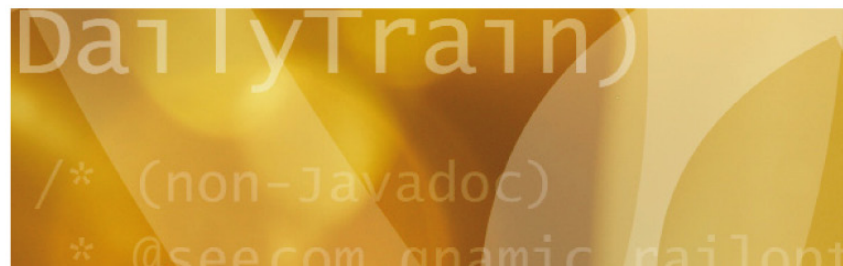
### Qnamic Inc.

Qnamic Inc. was founded in Switzerland in 2003 and is the leading developer and

supplier of integrated resource management systems in the railway industry.

# Qnamic

Intelligent  
Resource  
Management



Qnamic Inc.  
Fabrikstrasse 10  
CH-4614 Hägendorf  
Switzerland

Phone: +41 62 209 70 40  
Fax: +41 62 209 70 44  
info@qnamic.com  
www.qnamic.com

August 2010 © Qnamic Inc.  
Hägendorf – Switzerland